



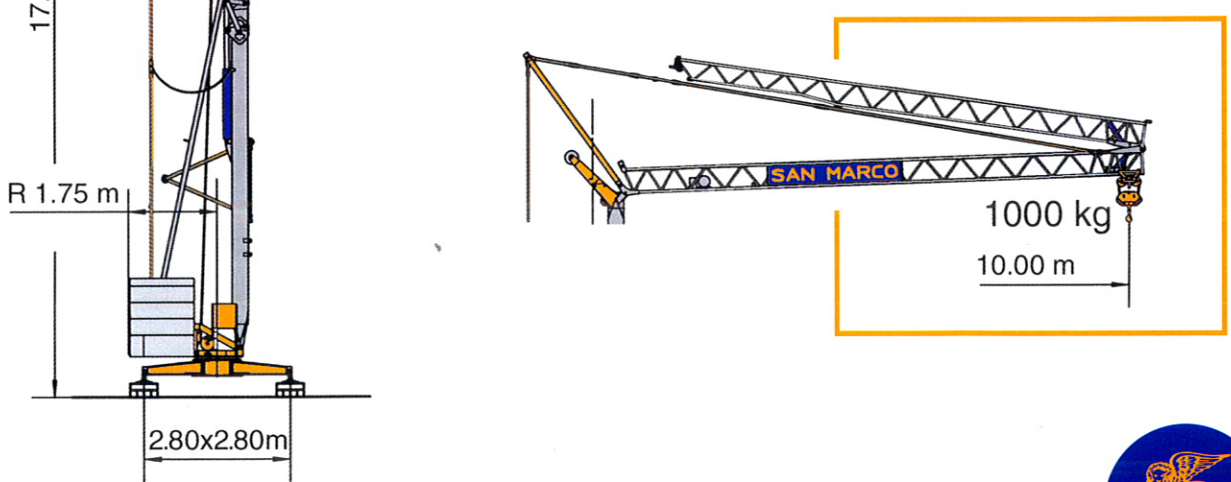
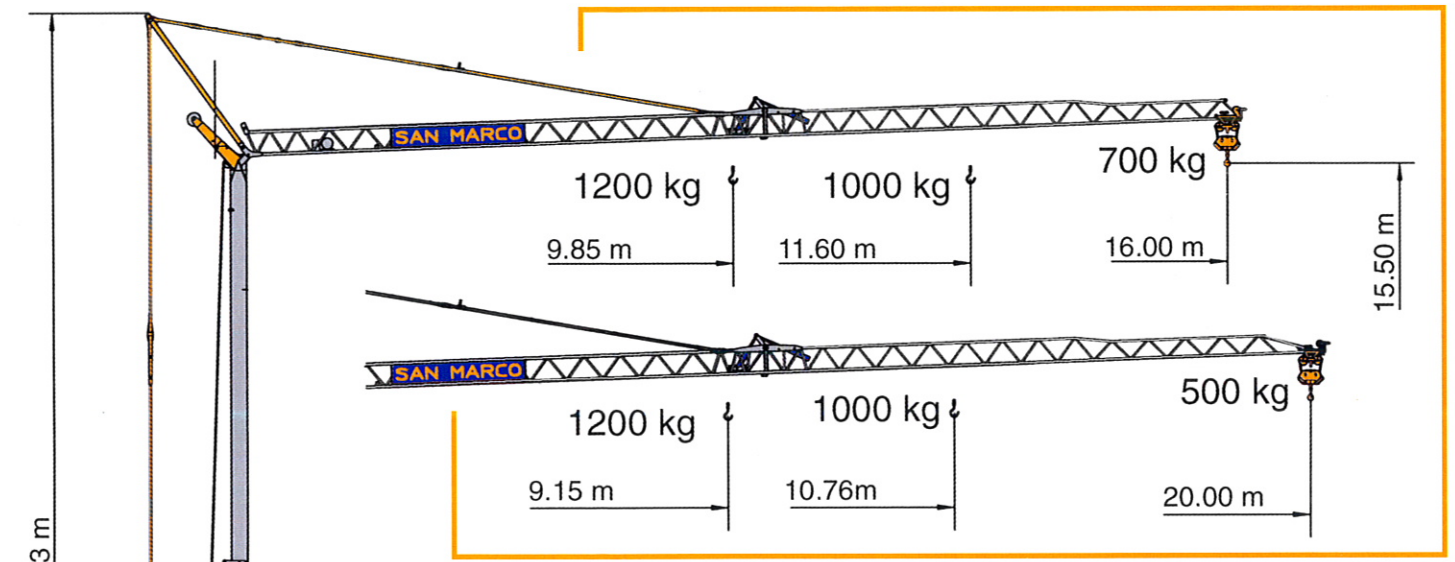
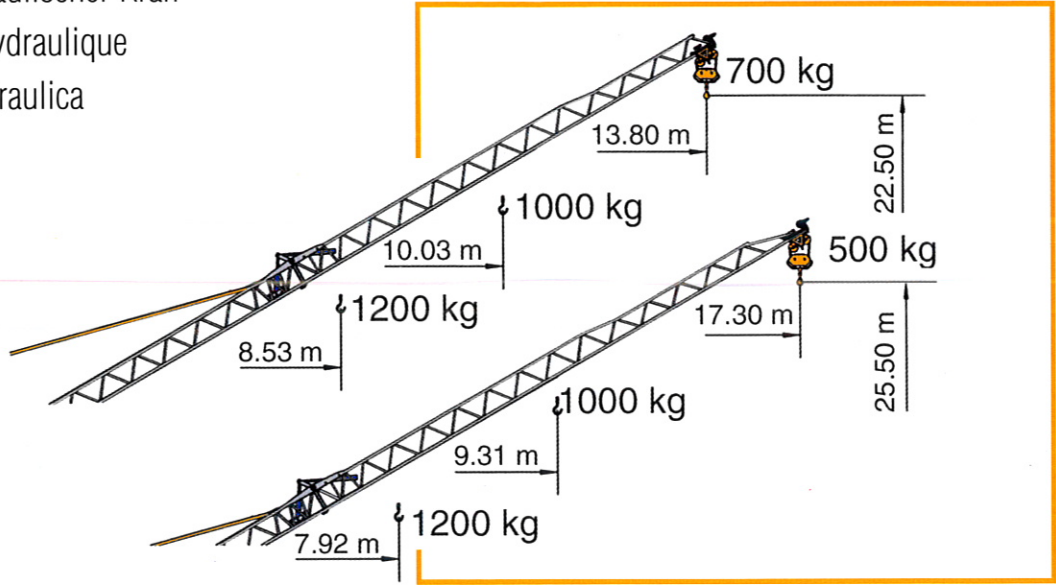


Gru automatica idraulica **SMH 183**

Triverter 444

-  Automatic crane hydraulic
-  Automatischer Hydraulischer Kran
-  Grue automatique hydraulique
-  Grua automatica hidraulica



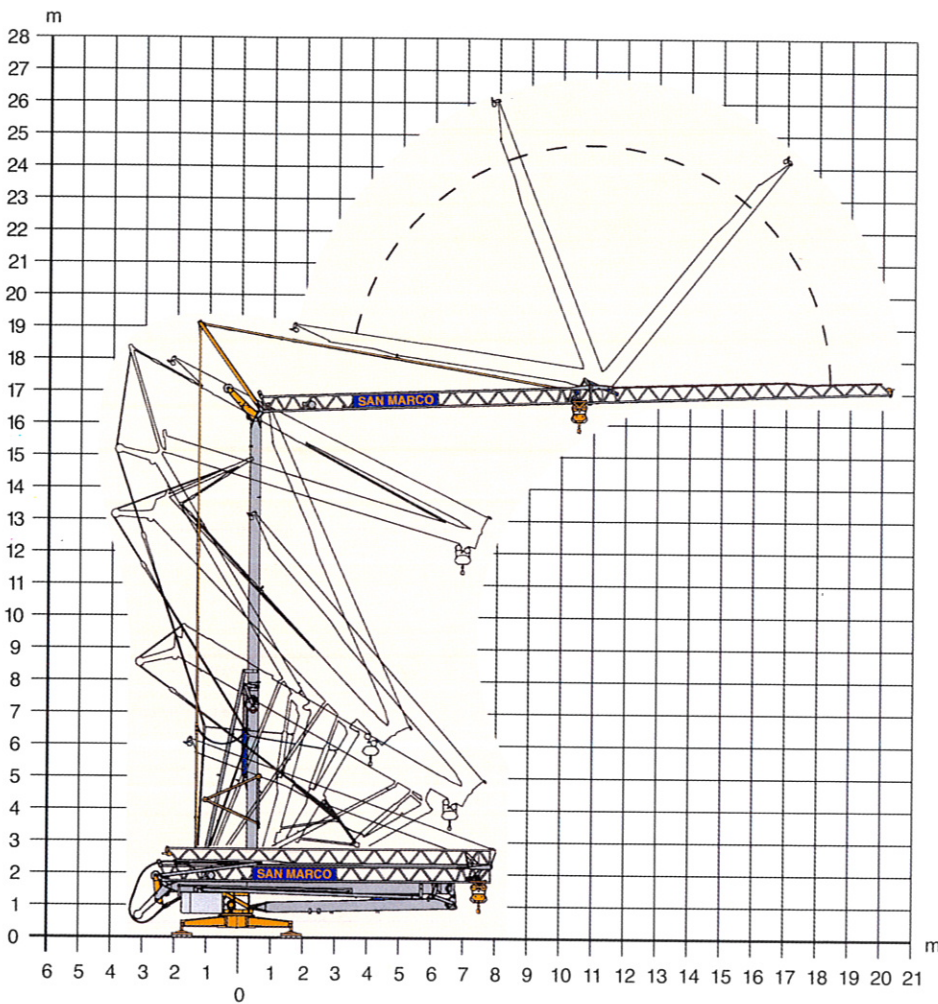
DIN 15018 H1 B3
ISO 4301







Montaggio

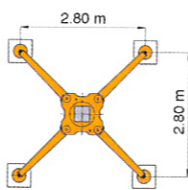
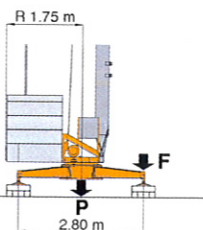
-  Erection
-  Montage
-  Montage
-  Montaje

kw 1.5



Reazioni (F) e pesi (P)

-  Reactions (F) - Loads (P)
-  Eckdrücke (F) - Krangewicht (P)
-  Réactions (F) - Poids (P)
-  Reacciones (F) - Pesos (P)



F	P	F	P
7.1 t	13.6 t	4.2 t	12.3 t

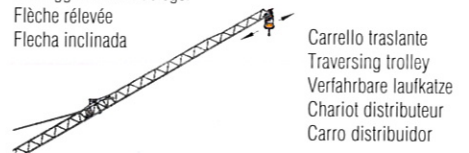
In servizio • In service
In Betrieb • En service
En servicio

Fuori servizio • Out of service
Ausser Betrieb • Hors service
Fuera de servicio

Diagrammi di carico

-  Loads diagrams
-  Lastkurven
-  Courbes de charges
-  Curvas de carga

Braccio impennato
Inclined jib
Schräggestellter Ausleger
Flèche relevée
Flecha inclinada



Carrello traslante
Traversing trolley
Verfahrbare Laufkatze
Chariot distributeur
Carro distribuidor

Kg	16	20
1200	8.53 m	7.92 m
1100	9.22 m	8.54 m
1000	10.03 m	9.31 m
900	11.02 m	10.29 m
800	12.24 m	11.49 m
700	13.80 m	13.04 m
600		15.00 m
500		17.30 m

Braccio orizzontale
Horizontal Jib
Flèche horizontale
Waagerechter Ausleger
Flecha horizontal



Kg	16	20
1200	9.85 m	9.15 m
1100	10.65 m	9.88 m
1000	11.60 m	10.76 m
900	12.76 m	11.83 m
800	14.18 m	13.15 m
700	16.00 m	14.82 m
600		17.00 m
500		20.00 m

Freccia chiusa
Closed Jib
Auslegerspitze zu
Flèche fermée
Flecha plegada



Kg	
1000	10.00 m

Gru automatica idraulica SMH 183

Triverter 444

Potenza elettrica necessaria

- Power requirement
- Anschlusswert
- Puissance électrique nécessaire
- Potencia eléctrica necesaria

	T	M
V	380	220
kW	5	3-6

Alimentazione elettrica

- Mains supply
- Netzstrom
- Réseau électrique
- Alimentación eléctrica

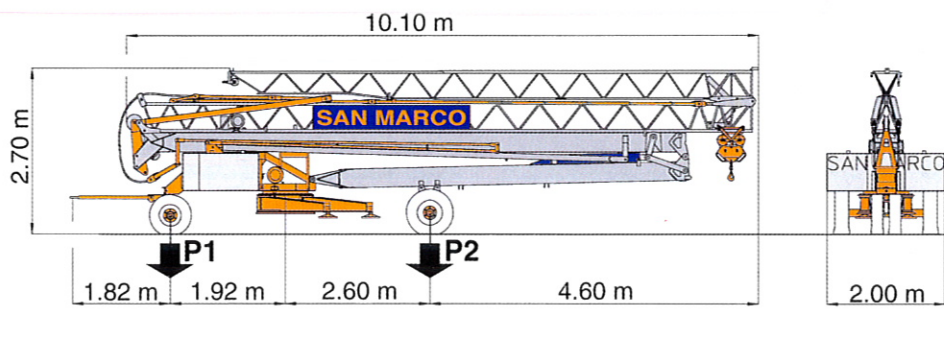
	T	M
V	380 (±5%)	220 (±5%)
Hz	50	50

Trasporto

- Transportation
- Transport
- Transport
- Transporte

P1 3000 kg P2 3600 kg
P1 + P2 6600 kg

Con assali e zavorra di montaggio • With axles and assembly counterweight • Mit transportachse und montiert Ballast • Avec essieux et lest de montage • Con ejes y contrapeso de montaje



Carrello - Variatore (Inverter)

- Trolley - Speed controller
- Katzfahren - Unrichter
- Chariot - Variateur
- Carro - Variador

m/min	7	14	21	28
kW	0.75			

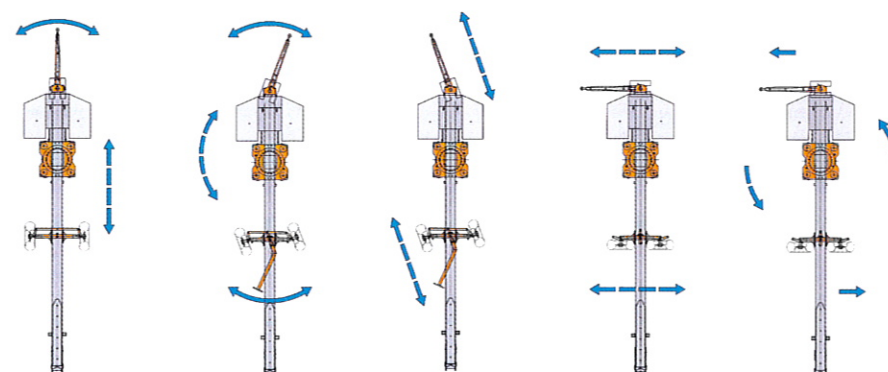
Sollevamento - Variatore (Inverter)

- Hoisting - Speed controller
- Heben - Unrichter
- Levage - Variateur
- Elevación - Variador

	T				M			
m/min	6.5	13	18.5	26	6.5	13	18.5	22
kg	1200	1200	800	600	1200	1200	800	600
kW	4				4			

Assali sterzanti - spostamento laterale*

- Steering axles - lateral displacement*
- Steuerbare achsen - Seitenzustellung*
- Essieux pivotants - Desplacement lateral*
- Eje direccional - Desplazamiento lateral*



- Sterzante
Steering
Steuerbar
Simple pivotant
Direccional
- Doppio sterzante
Double steering
Doppelsteuerbar
Double pivotant
Direccional doble
- Spostamento obliquo
Oblique displacement
Schräge bewegung
Deplacement transversal
Desplazamiento oblicuo
- Spostamento laterale
Lateral displacement
Seitenzustellung
Desplacement lateral
Desplazamiento lateral
- Rotazione 360°
Rotation 360°
Drehung 360°
Virage 360°
Giro 360°

Rotazione - Variatore (Inverter)

- Slewing - Speed controller
- Schwenken - Unrichter
- Orientation - Variateur
- Orientación - Variador

rpm	0.25	0.5	0.75	0.9
kW	1.1			

- * a richiesta • on request • auf Wunsch • sur demande • sobre demanda
- M monofase • single-phase • einphasig • monophasé • monofasica
- T trifase • 3phase • dreiphasig • triphase • trifasica
- media/grande velocità sollevamento • medium/major hoisting speed • mittel/große Hubgeschwindigkeit • moyenne/grande vitesse de levage • velocidad media/gran velocidad elevacion
- media/grande velocità rotazione • medium/major rotation speed • mittel/große Drehgeschwindigkeit • moyenne/grande vitesse orientation • velocidad media/gran velocidad giro
- media/grande velocità carrello • medium/major trolley speed • mittel/große Katzfahrgeschwindigkeit • moyenne/grande vitesse chariot • velocidad media/gran velocidad carro

- lontano sbraico (sx) - vicino sbraico (dx) • distant jib (sx) - near jib (dx) • Ausladung fern (sx) - Ausladung nah (dx) • flèche lointain (sx) - flèche proche (dx) • carro punta (sx) - carro torre (dx)
- salita sollevamento (sx) - discesa sollevamento (dx) • load block up (sx) - load block down (dx) • Heben Hebevorgang (sx) - Senken Hebevorgang (dx) • montée levage (sx) - descente levage (dx) • subida de gancho (sx) - bajada de gancho (dx)
- rotazione sinistra (sx) - rotazione destra (dx) • left rotation (sx) - right rotation (dx) • Drehung links (sx) - Drehung rechts (dx) • orientation gauche (sx) - orientation droite (dx) • giro izquierda (sx) - giro derecha (dx)